

2025



2025

		/	
1			
2			

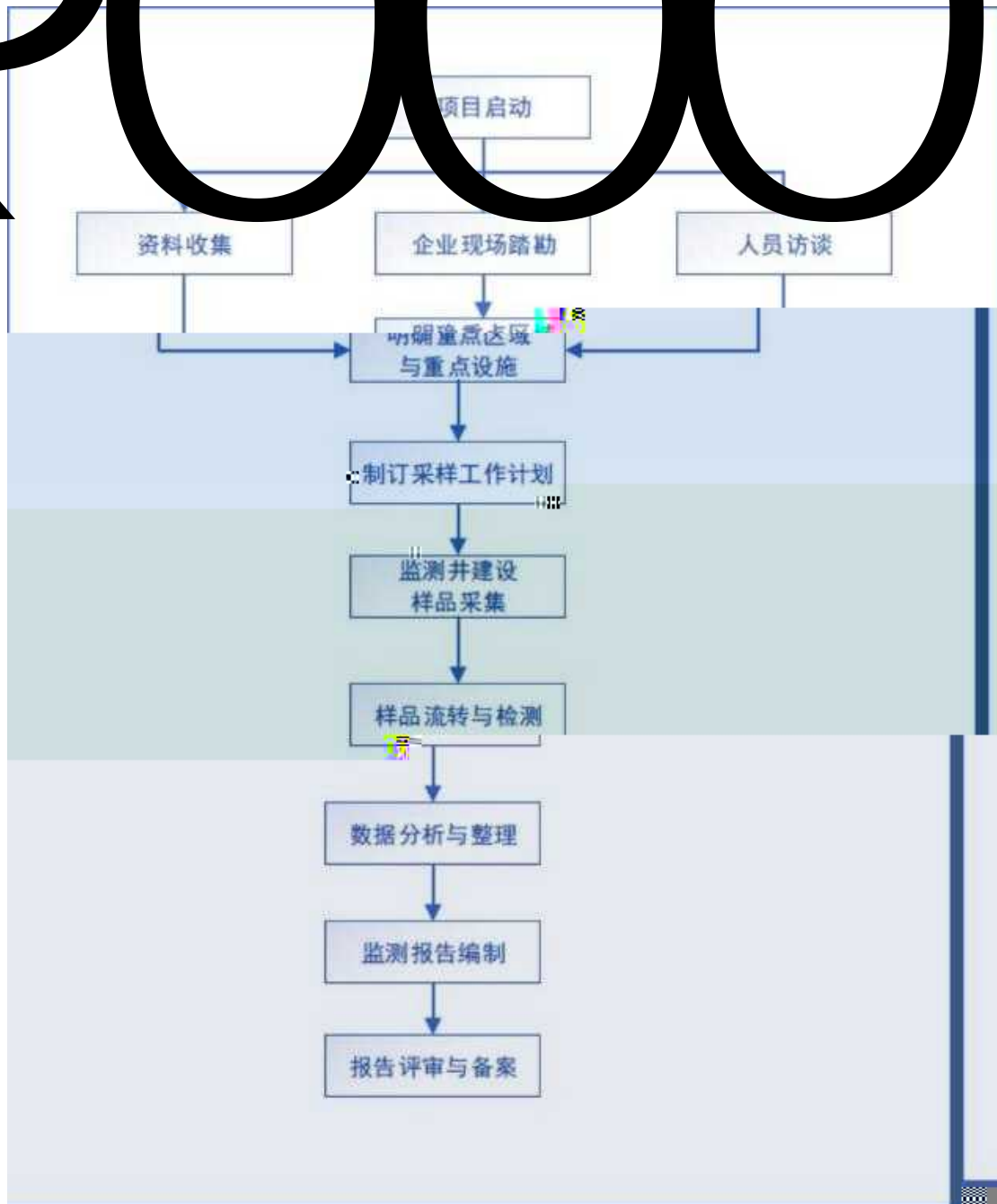
1

1.1

"

"

9000



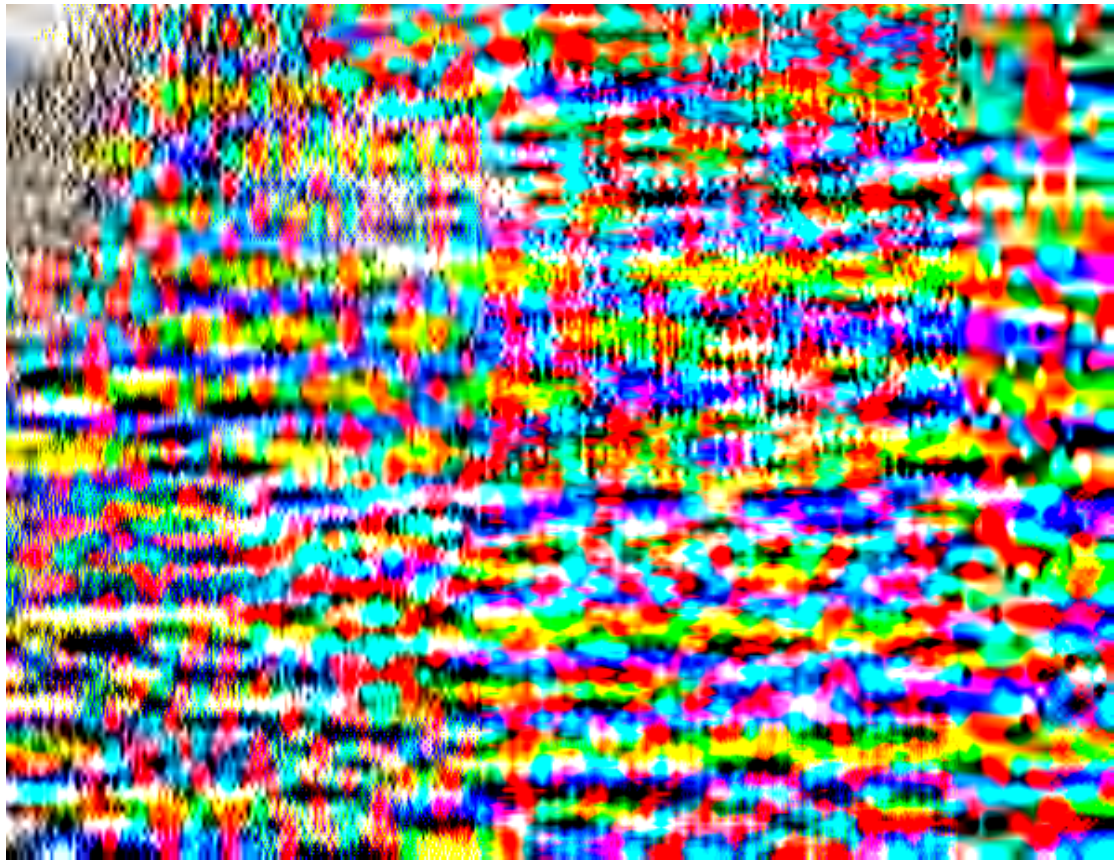
2

2.1

2010 3

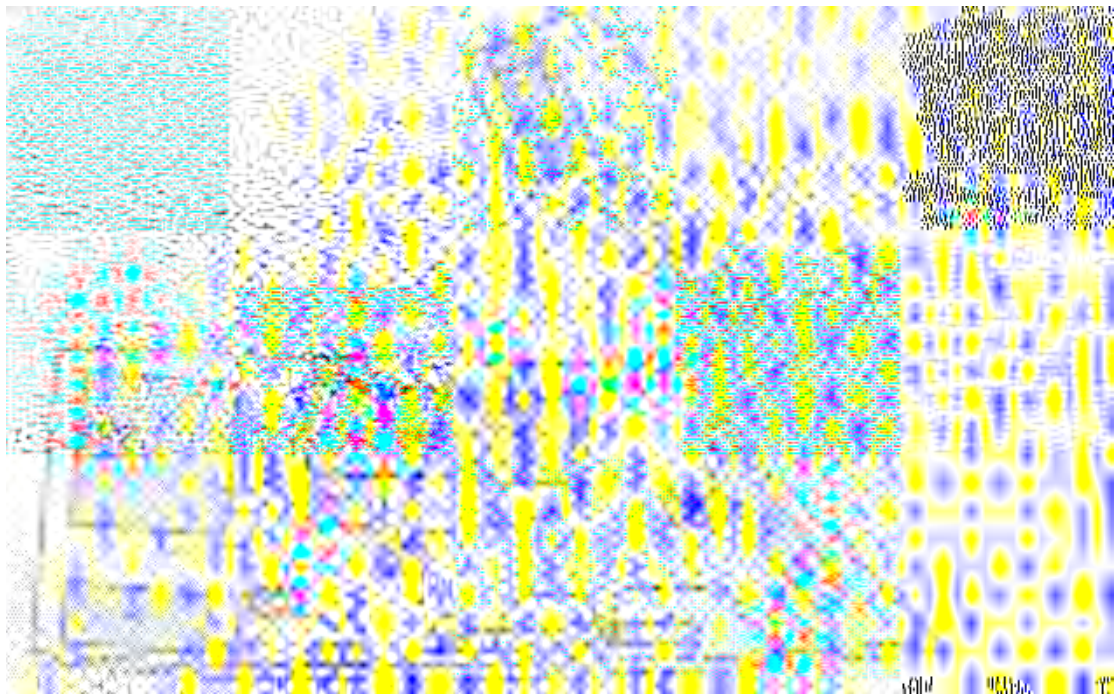
1999 7

26065.1171



b

2-1



a

b

2-2

3

3.1

3.1.1

800 120 2035 800 900

3. 1. 3

2019 13
1243. 4 9 100 108
35 567. 5 73 675. 9

3. 2

3. 2. 1

3-1

3-1

3. 2. 2

4

4.1

2008 12
6000 /
2018 1

7000 /

2000 /

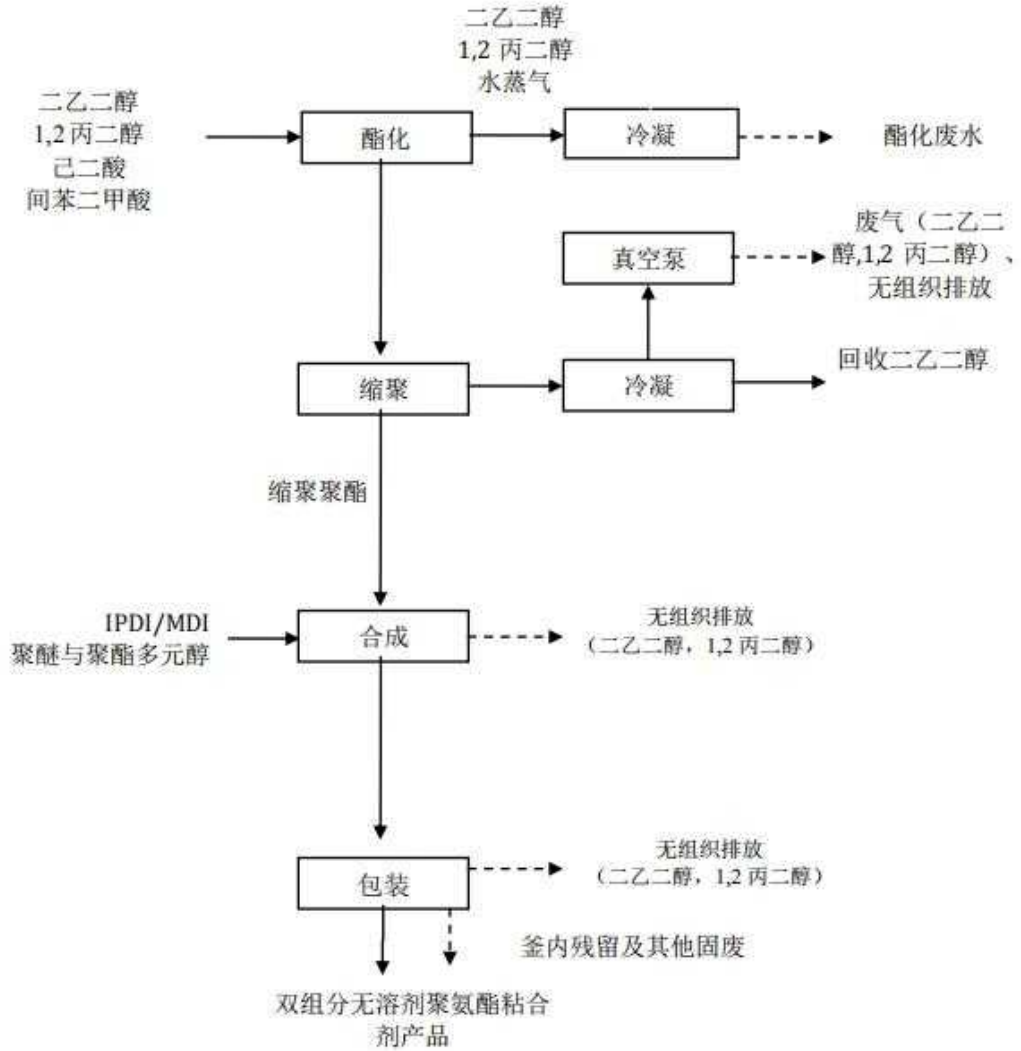
4.2

4-1
2

4-2
460 24h/

3

7360



4-3

7200h

300 24h/
A B
A B
ê ê

15		
16	VOCs	

5

5.1

5.1.1

5.1.2

VOCs

5.1.3

5.2

5-1

1		
2		
3		
4		

5		



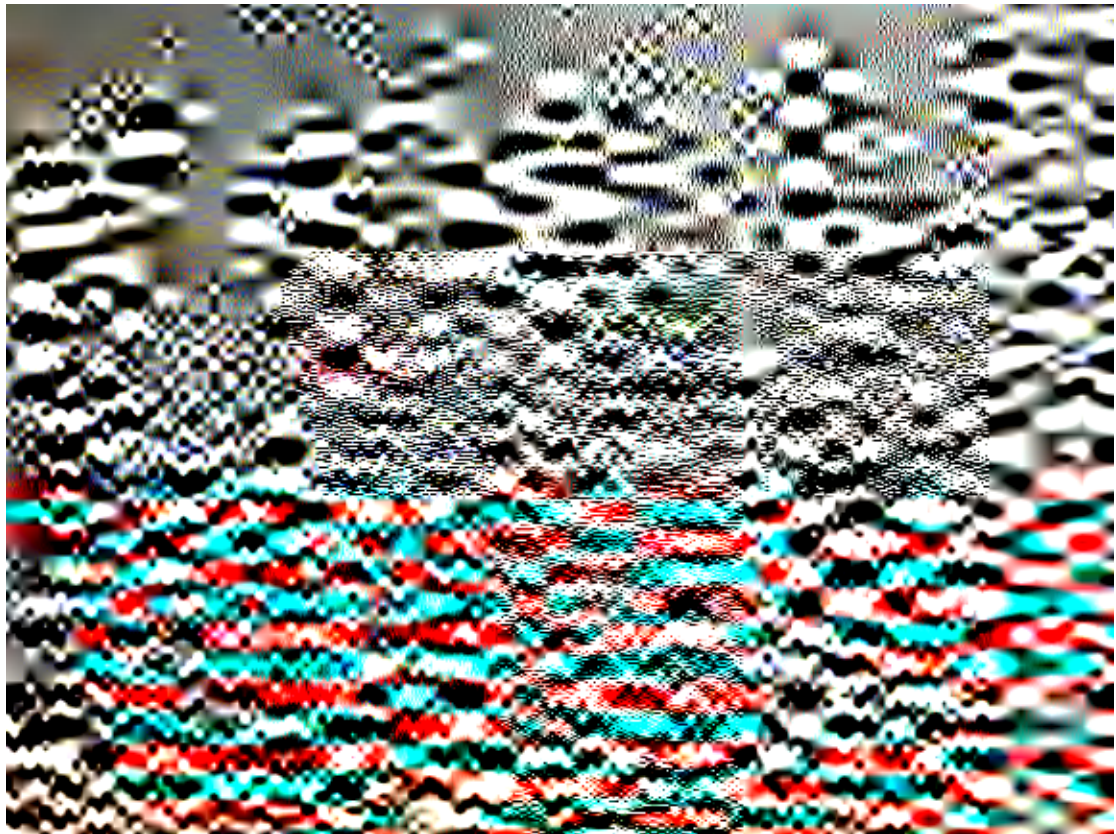
5-1



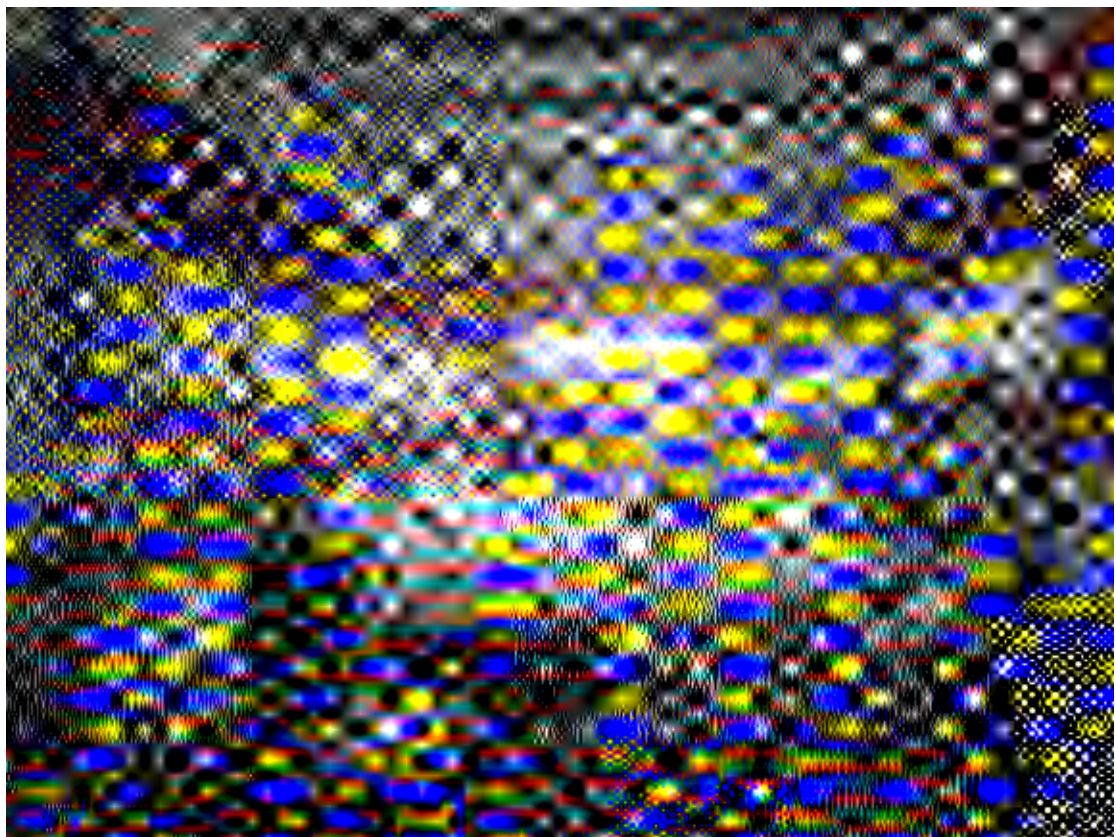
5-2



5-3



5-4 2



5-5



5-6



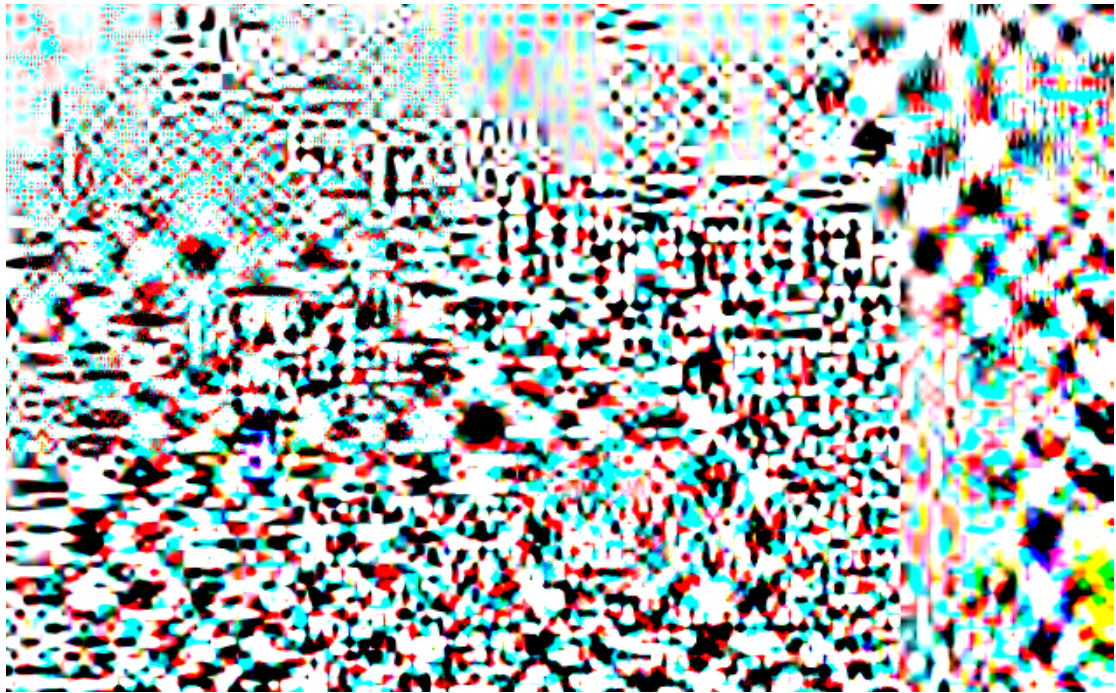
5-7



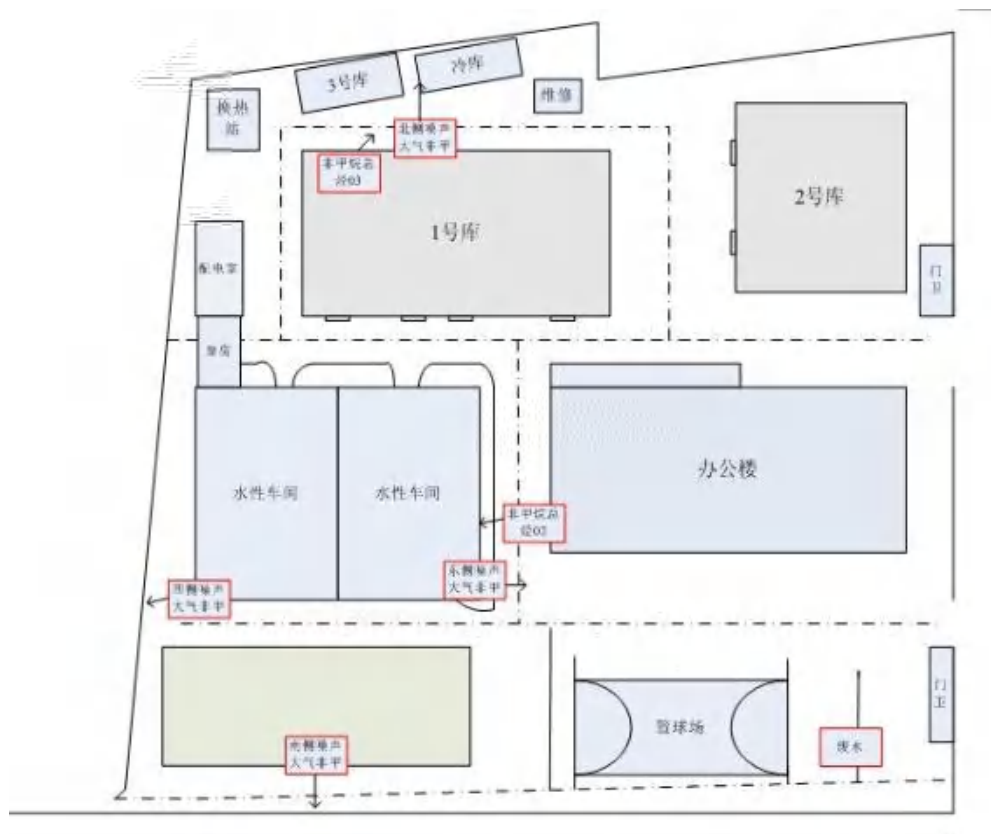
5-8



5-9



a



b

3-10

6

6.1

6.1.1

9

17

8

6-1

6-2

6-1

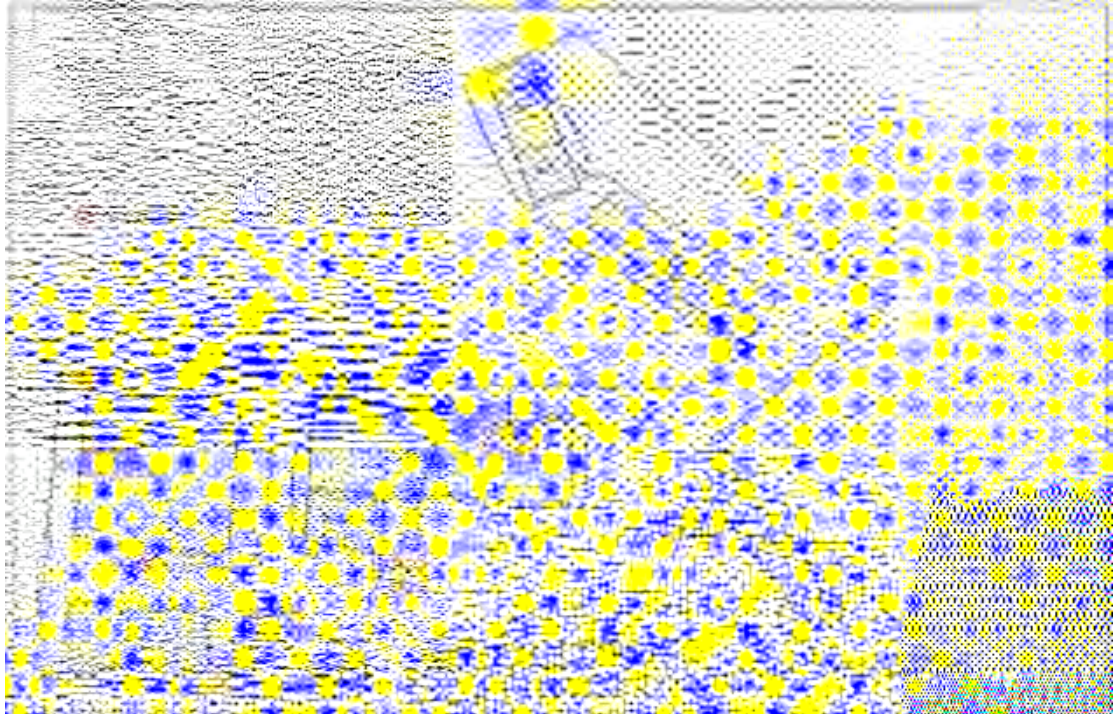
	E	N
S-1	115° 59 06.07	39° 44 40.84
S-2	115° 59 05.27	39° 44 39.01
S-3	115° 59 07.81	39° 44 38.58
S-4	115° 59 06.61	39° 44 38.26
S-5	115° 59 04.21	39° 44 36.55
S-6	115° 59 14.17	39° 44 35.92
S-7	115° 59 14.32	39° 44 35.38
S-8	115° 59 14.53	39° 44 34.58
S-9	115° 59 13.81	39° 44 33.76
S-10	115° 59 10.95	39° 44 32.42
S-11	115° 59 12.28	39° 44 32.98
S-12	115° 59 14.06	39° 44 33.22
GW1	115° 59 03.90	39° 44 39.35
GW2	115° 59 06.51	39° 44 37.47
GW3	115° 59 08.14	39° 44 36.22
GW4	115° 59 10.09	39° 44 34.51
GW5	115° 59 14.35	39° 44 33.00

6.1.2

3

5
2

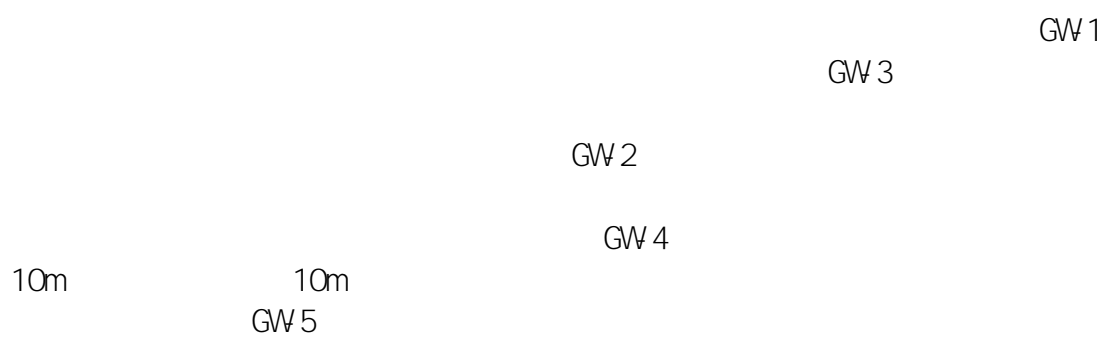
6-3



6-4

10	S-7		C10- C40
11	S-8	DLC	
12	S-9		
13	S-10		
14	S-11		
15	S-12		
16	GW4		
17	GW5		

6.2.2



6-4

1	GW1
2	GW2

2-2
"

C10-C40

2

7

7.1

